



COMPANY PROFILE



TPI TECHNOLOGY
GROUP PARTNERS
INTERNATIONAL

Innovate. Collaborate. Conserve

info@tpigrp.com

www.tpigrp.com

A portrait of Dr. C.N. Ifeadi, a Black man with short, dark hair, smiling broadly. He is wearing a patterned suit jacket over a light-colored shirt and a tie. The background is a soft, out-of-focus gradient of light colors.

“At **TPI**, our commitment is to leverage technology and partner with our clients, to deliver efficient business solutions.”

Dr. C.N. Ifeadi FNES, MNSE P.E (1937 - 2017)
Founder, TPI Group

WELCOME

TABLE OF CONTENTS

The CEO Letter	4
About Company	6
Our Clients	6
Meet Our Team	7
Environment	08-12
Oil Field Solids Control Services	13
Waste Management	14-16
Water Treatment And Management Services	17-18
Laboratory Services	19
EPC And Asset Integrity	20-21
Digital Services	22
Training	23
TPI In Numbers	24

THE CEO LETTER



MR. CHIFUM IFEADI
MD/CEO

Welcome to Technology Partners International (TPI). As the challenges of our global, and indeed local environment grow increasingly complex, our mission becomes ever clearer and more compelling. At the heart of TPI lies a commitment to form enduring partnerships with our esteemed clients, standing shoulder to shoulder in addressing some of the most pressing environmental and technological concerns. We understand the intricate balance and the symbiotic relationship between nature, business, and technology. Our aim is to ensure that as you tread on this path, you have a partner well-equipped to offer efficient, cost-effective, and timely solutions.

TPI's strength lies in our comprehensive approach to environmental challenges. Since starting operations in 1992, we have consistently increased our service offerings and the quality of our delivery. We provide expert environmental consulting, helping businesses navigate regulatory frameworks and sustainability initiatives. Our state-of-the-art laboratory services delve deep, ensuring accurate data for decision-making. When it comes to waste and water management engineering, our innovative state-of-the-art solutions are both sustainable and efficient, embodying the harmony of design with ESG considerations. And in this era of rapid digitization, our digital services aim to harness the power of technology (software & hardware), making data accessibility, interpretation, and implementation easier than ever.

Our dedication to data-driven solutions remains a cornerstone. We see challenges as opportunities—to innovate, collaborate and conserve our environment, as well as set new benchmarks in environmental stewardship. With best-in-class tools and expertise, we don't just aim to solve problems; we seek to redefine what is possible. Let us join hands on this journey towards creating a more sustainable and harmonious world.

With gratitude and optimism.

ABOUT COMPANY

At TPI, we provide sustainable, innovative, and cost-effective solutions that meet the unique environmental challenges faced by investors and environmental managers. Our commitment to integrity is at the core of everything we do, as we aim to foster a sustainable future for project stakeholders. Our innovative approach to problem-solving enables us to develop solutions that are tailored to the specific needs of our clients. We strive to deliver solutions in a timely manner, ensuring that our clients' meet regulatory targets and environmental concerns are addressed promptly and efficiently. We are driven by a passion for the environment and a commitment to excellence in all our endeavors."



OUR VISION

Top tier company offering innovative environmental support services in Sub-Saharan Africa with a business mindset driven by client-centricity, a worldwide reputation for integrity, and innovative problem-solving.



OUR MISSION

To Provide Innovative, Cost-Effective, and Quality Business Solutions within the Sub-Saharan African Region with Integrity and Timely Delivery.

OUR CLIENTS



MEET OUR TEAM



Mr. Chiedu Ifeadi MBA

Chief Operating Officer (COO)

"Mr. Chiedu Japhet Ifeadi is a distinguished project manager and a member of the Nigeria Institute of Administrators. His comprehensive expertise spans areas such as asset management, good laboratory practices, analytical group management, marketing, and business administration. He has adeptly managed projects valued at over USD 5 million, serving both governmental and extractive sectors. Over the years, Mr. Ifeadi has participated in numerous professional conferences, seminars, and training sessions. He is a proud member of both the Certified Board of Administrators of Nigeria and the Nigerian Environmental Society."



Mrs. Franca Ezeana

Chief Financial Officer (CFO)

Mrs. Franca Ezeana, a member of the Nigerian Institute of Chartered Accountants, excels in corporate accounting, financial analysis, and registry administration. She is a dedicated and goal-driven professional with strong supervisory skills. Mrs. Ezeana deeply understands the significance of a company's financial performance, benchmarking it against internal objectives and competitors' metrics.



Dr. Vaikosen Edebi

VP, Technology

Dr. Vaikosen Nicholas Edebi, an Associate Professor, boasts over 39 years of expertise in the oil and gas sector as a distinguished chemist. His extensive skills encompass the creation of standardized operating and analytical procedures, research and development, as well as environmental pollution monitoring. Dr. Edebi is an esteemed member of the Institute of Public Analysts of Nigeria (MIPAN), Nigeria Environmental Society (MNES), and the Chemical Society of Nigeria (MCSN).



Mrs. Chinyere Omusuku

Head, Laboratory Services

With over twenty years in the oil and gas sector and a Bachelor of Science in Analytical Chemistry, Mrs. C Omusuku stands out for her acumen in laboratory management, environmental analysis, and regulatory compliance. She has actively contributed to numerous environmental projects, including EIAs, EBS, EMPs, ECMs, PIAs, and various sampling and analytical initiatives.

ENVIRONMENT

TPI is recognized by Environmental Business Journal and Engineering News-Record as one of the top large businesses working in the environmental industry today. These environmental and engineering services, among others, are listed below.

1. Environmental Planning & Management

Projects are exposed to several risks with potential for value erosion in business, litigation and damage to natural resources. Broadly, TPI delivers sustainable value in projects through:

- Site feasibility studies.
- Risk reviews and mitigations.
- Environmental, Social, and Health Impact Assessments (ESHIA).
- Environmental Management Plans (EMP), Environmental Audits (EA) & Environmental Evaluation Studies (EES).
- IFC/World Bank Performance Standards on Environment and Social Sustainability Compliance.
- Stakeholders mapping and management.
- Regulatory Permitting and Approvals.
- Environmental risk modeling.



2. Environmental Compliance Monitoring (ECM):

Routine environmental monitoring is a critical aspect of ensuring the environmental safety of project areas and compliance of local and international regulations. This service includes the collection and analysis of samples from various environmental media, such as air, water, and soil, to detect early, the introduction of any harmful pollutants or contaminants emanating from anthropogenic activities in the area. Our ECM service covers the following:





Aqueous

- Surface water bodies (rivers, ocean), including those receiving industrial discharges.
- Groundwater, which can be affected by industrial contaminants seeping into the soil and reaching aquifers.
- Industrial effluents and runoffs
- Rainwater
- Bilge water



Gaseous

- Ambient air (outdoor air), including monitoring for pollutants emitted by processes.
- Indoor air (within buildings)
- Stack/gaseous emission monitoring
- Particulate matter (dust, aerosols), including industrial emissions that can contribute to air pollution and settle on surrounding areas.



Solids

- Soil, including industrial sites where soil contamination can occur due to spills, leaks, or improper waste disposal practices.
- Sediments in rivers, lakes, and oceans, where industrial discharges can accumulate and impact aquatic ecosystems.
- Waste and landfill sites, including monitoring for leachate that can contaminate nearby soil and water resources.
- Mine tailings and contaminated land, which can result from industrial mining activities and require monitoring for heavy metals and other pollutants.
- Bioaccumulated contaminants in organisms (plants, animals), including those exposed to industrial discharges through the food chain.



3. Environmental Site Assessment & Characterization

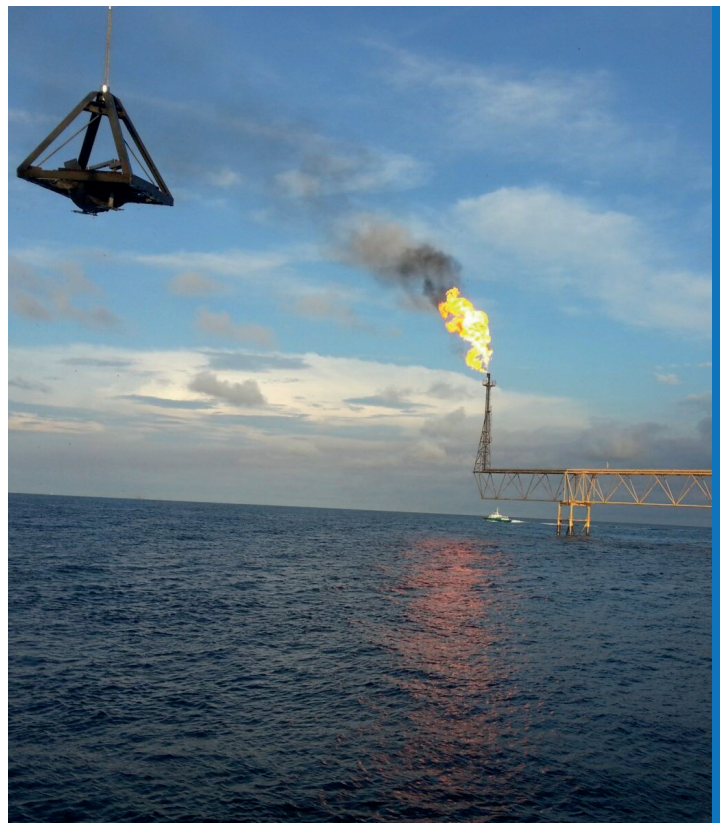
Our Environmental Site Assessment services include Phase I and II assessments, which are often required by lending institutions, regulatory agencies, and potential buyers or sellers of property. We also offer transaction-screening assessments, which are quicker and less expensive than Phase I and II assessments, but still, provide valuable information about a property's environmental condition.



4. Climate change, Sustainability and GHG Reporting

We provide a comprehensive suite of services, including:

- GHG Inventory and Reporting: We help companies accurately measure and report their GHG emissions in compliance with international, national, and industry-specific standards such as the GHG Protocol, ISO 14064, and the Greenhouse Gas Reporting Program.
- ESG Risk Assessment and Training: We help companies understand and manage the environmental, social, and governance risks they face, and develop strategies to mitigate them.
- Carbon Footprint Reduction: We assist companies in identifying and implementing cost-effective measures to reduce their carbon footprint, such as energy efficiency and renewable energy projects.
- Sustainability Strategy and Planning: We help companies develop and implement sustainability strategies that align with their business goals and address their ESG and GHG performance.



5. Health, Social Engagement & Resettlement

Our team of Consultants and Project Managers carry out Social Impact Assessments (SIA), develops a Resettlement Action Plans (RAP) and Environmental Social Management Framework (ESMF) that guides our clients through making strategic, concise decisions on health, and social engagement as well as resettlement.

Our strengths include:

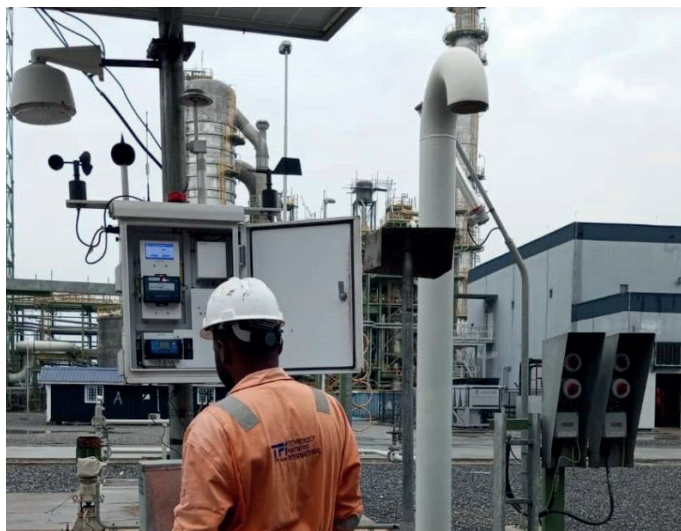
- Vast regional network of social and health impact specialists with vast experience with Resettlement Planning and Stakeholder Engagement.
- Utilizing Data and Analytics tools to enable informed decision making.
- Deep understanding of the local ecosystem within the Western and Central African Regions.



6. Air Quality & Acoustics

TPI offer a wide array of air quality and acoustic measurement services for Ambient/outdoor and indoor locations. Some notable indoor and outdoor air quality parameters that we specialize in measuring and assessing include but not limited to:

- Ambient Air Quality
- Indoor Air Quality (IAQ)
- Acoustics (Noise & Vibration)
- Stack Emission Monitoring
- Modeling Services



7. Clean-up & Remediation services

TPI is your trusted partner offering innovative and cost-effective Clean-up, spill control, and remediation of hazardous contamination sites from accidental spills in the mining and oil and gas industry. Our team of experienced professionals is dedicated to helping you restore your site to meet stringent regulatory limits and protect the environment from further harm. We offer a range of services to support your clean-up and remediation efforts, including:

- Site assessment and evaluation
- Contaminant identification and testing
- Remediation planning and design
- Remediation implementation and monitoring.



8. Hydrological & Hydrogeological Services

Our team of experienced professionals provide expert, cost-effective solutions for all your water-related needs by using state-of-the-art tools and techniques to collect and analyze data. We offer a range of services to support your hydrological and hydrogeological projects, including:

- Water resources assessments and modeling
- Groundwater assessments and modeling
- Surface water recharge analyses
- Aquifer testing and monitoring
- Water quality assessments

9. Geophysical & Geotechnical Services

We offer a range of services to support your geophysical and geotechnical projects, including:

- Geophysical surveys (seismic, electromagnetic, ground penetrating radar)
- Geotechnical investigations and testing
- Bathymetry Survey (Investigate the morphology lithology in formations)
- Soil and rock mechanics
- Slope stability analysis
- Foundation design

10. Geographic Information System (GIS)

TPI provides cutting-edge GIS and Remote Sensing services to cater for various position and location-based services cutting across various industries. TPI offer a range of services to support your GIS projects, including:

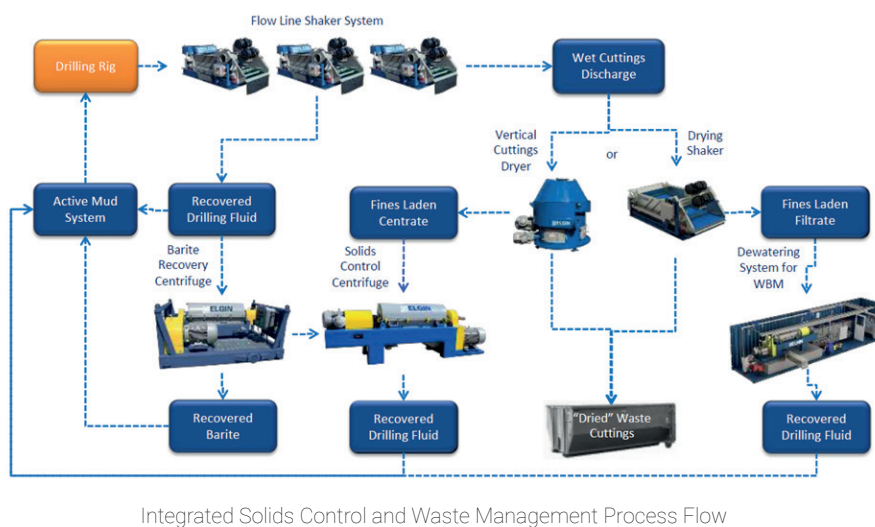
- Spatial data analysis and modeling
- GIS database development and management
- Custom mapping and visualization
- Web mapping and GIS applications
- GIS training and support

OIL FIELD SOLIDS CONTROL SERVICES

 Powered By
ELGIN
 POWER AND SEPARATION SOLUTIONS

In the dynamic landscape of oil & gas drilling, solids control stands as the linchpin of efficient, sustainable, and profitable operations. At its core, effective solids control is more than just an operational necessity—it's a strategic approach to amplify drilling performance, enhance environmental responsibility, and drive down costs.

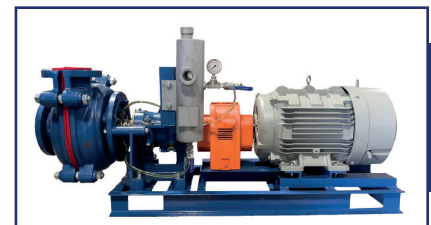
At TPI, solids control transcends the simple removal of solids from drilling fluids. Our turn-key solution ensures efficient management of high volumes of cuttings including the recovery and processing of drilling fluid right on site. As environmental regulations tighten and industry scrutiny intensifies, an efficient solids control system emerges as a powerful ally. By reducing the volume of waste generated, operators can significantly diminish their environmental footprint, resulting in both ecological and economic dividends. On-site waste declassification, a feature of premium solids control, further underscores this commitment, ensuring compliance and safeguarding against potential liabilities.



Integrated Solids Control and Waste Management Process Flow



Decanter Centrifuge



Abrasion Resistant Slurry Pump



Vertical Cuttings Dryer



Shale Shaker

We collaborate with operators to:

- Enhance the financial feasibility and robustness of well site operations
- Comply with and often surpass local regulatory standards, while also fulfilling corporate sustainability and responsibility goals
- Tackle tailored waste management issues, synchronizing with the drilling tempo
- Curtail the quantity of waste generated (up to 30%) and its subsequent treatment necessities
- Implement on-site processing solutions, reducing or eliminating expensive waste transport
- Promote the recycling of precious drilling fluids and natural resources, thus curbing excessive use and waste generation
- Maintain fluid integrity to safeguard downhole apparatus, avert Non-Productive Time (NPT), elevate drilling efficacy, and secure the reservoir's production capacity."

WASTE MANAGEMENT

TPI has a team of experienced professionals who provides expert solutions for all your waste management needs. We offer a range of services to support your waste management efforts, including:



1. Cuttings Management

In a world ever-concerned with environmental sustainability, navigating the complex landscape of waste management in oil and gas drilling is more important than ever. For decades, we have been at the forefront, guiding industry players to a greener future, one solution at a time.

Technology Partners International (TPI) is deploying the CSI Cyclone Vertical Cuttings Dryers (VCDs) within the African continent. A properly deployed Vertical Cuttings Dryer, can significantly reduce waste disposal costs, dramatically lower whole mud losses within those wastes, and improve the overall quality of the drilling fluid by allowing the shale shakers and centrifuges to be used at their full operating potential. Bottomline, it's a money saver!



Unparalleled Fluid Recovery

- High G-force Operation:** Our VCD units operate at high G-forces, ensuring maximum recovery of expensive synthetic oil-based muds (SOBM) and water-based muds (WBM), thus saving costs and promoting sustainability.
- Advanced Barite Recovery:** The system allows for the efficient recovery of barite up to 90%, facilitating its reuse in the drilling fluid system and reducing the environmental footprint of your operations.

State-of-the-Art Separation Technology

- Fine Cuttings Removal:** The VCD technology is designed to effectively remove even the finest cuttings (30µm to 2cm), reducing disposal volumes substantially.
- Continuous Feed Mechanism:** Experience the advantage of a continuous feed mechanism (up to 90 tons per hour) that ensures a steady flow of cuttings, enhancing overall operational efficiency.

Cutting-Edge Waste Reduction and Declassification

- Volume Reduction:** Manage drill cuttings more efficiently with a technology that significantly reduces the waste volume, minimizing your environmental footprint.
- Waste Declassification:** Modern VCDs are often designed to help operators comply with increasingly strict environmental regulations surrounding the disposal of drilling waste. It can support waste declassification, with oil retained on cuttings to less than 5%, suitable for secondary waste management processes.

Compared with the Alternative

Item	Vertical Cuttings Dryer (VCD)	Other technologies
Process Overview	<ul style="list-style-type: none"> <input type="checkbox"/> VCD relies on mechanical separation to remove drilling fluids (water-based or oil-based) from cuttings. <input type="checkbox"/> The cuttings are rotated and subjected to centrifugal forces, allowing the liquid to be separated and discharged. 	<ul style="list-style-type: none"> <input type="checkbox"/> uses heat to vaporize and separate hydrocarbons (oil) from drill cuttings. <input type="checkbox"/> The process involves heating the cuttings in a controlled environment, causing the oil to evaporate and leaving behind clean solids.
Efficiency	<ul style="list-style-type: none"> <input type="checkbox"/> Effective in removing drilling fluids (water or oil) from cuttings on the rig as part of the solids control process. Can reduce OOC up to 2%. <input type="checkbox"/> Typically, VCDs can recover a significant portion of the oil for reuse or sale, right on site. 	<ul style="list-style-type: none"> <input type="checkbox"/> Highly efficient in removing oil and other hydrocarbons from cuttings. <input type="checkbox"/> Typically, TDUs can recover a significant portion of the oil for reuse or sale.
Environmental Impact	<ul style="list-style-type: none"> <input type="checkbox"/> Generally considered more environmentally friendly as it does not involve high-temperature operations. <input type="checkbox"/> Requires less energy and has lower emissions compared to other technologies in the market. 	<ul style="list-style-type: none"> <input type="checkbox"/> Has a higher environmental impact and carbon footprint due to the energy required for heating. <input type="checkbox"/> Emissions control and waste disposal are critical to minimize environmental harm.
Resource Recovery	<ul style="list-style-type: none"> <input type="checkbox"/> Efficiently recovers valuable drilling fluids and hydrocarbons (Less than the TDU). <input type="checkbox"/> The clean solids can be reused for land reclamation or disposal. 	<ul style="list-style-type: none"> <input type="checkbox"/> Efficient at recovering valuable hydrocarbons, which can be reprocessed or sold. <input type="checkbox"/> The clean solids can be reused for land reclamation or disposal.
Operating cost	<ul style="list-style-type: none"> <input type="checkbox"/> Lower operating costs compared to TDU due to less energy usage. <input type="checkbox"/> More cost-effective for drilling fluid recovery and drill cuttings declassification. 	<ul style="list-style-type: none"> <input type="checkbox"/> Typically, higher operating costs due to energy consumption and maintenance. <input type="checkbox"/> Cost-effective if the value of recovered hydrocarbons justifies the expenses.
Regulatory Compliance	<p>Generally faces fewer regulatory challenges and emissions control requirements, while still able to manage drill cuttings to meet regulatory limits required for waste declassification (<5% OOC).</p>	<p>May require more stringent emissions control and regulatory compliance due to high-temperature processing.</p>



2. Integrated Solid Waste Management (ISWM) system

We support our clients by providing an Integrated Solid Waste Management (ISWM) system designed to be both economical and effective. Our strategic approach to sustainable management of solid waste covers all sources and aspects including waste generation, segregation, transfer, sorting, treatment, recovery, and disposal in an integrated manner, with emphasis on maximizing resource use efficiency.



3. Incinerator

We have extensive experience in designing and implementing safe and effective incineration systems for a variety of waste streams. Incineration is a thermal treatment technology that can be used to destroy a wide range of waste types, including hazardous and non-hazardous wastes. Some examples of waste types that can be managed using incineration include:

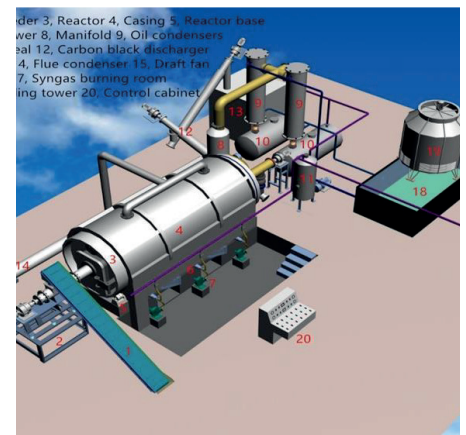
- Medical waste
- Industrial process waste
- Organic waste (e.g. food waste, agricultural waste)
- Chemical waste (e.g. pesticides, solvents)
- Municipal solid waste



4. Thermal Desorption

We can help you manage hazardous waste using the traditional thermal desorption techniques, which use heat to separate contaminants from waste materials. Thermal desorption can be used to treat a wide range of hazardous waste types, including:

- Contaminated soil
- Sludge and slurry
- Spent catalysts
- Asbestos
- PCB-contaminated materials



WATER TREATMENT AND MANAGEMENT SERVICES

 TruClear
 WATER SOLUTIONS INC.

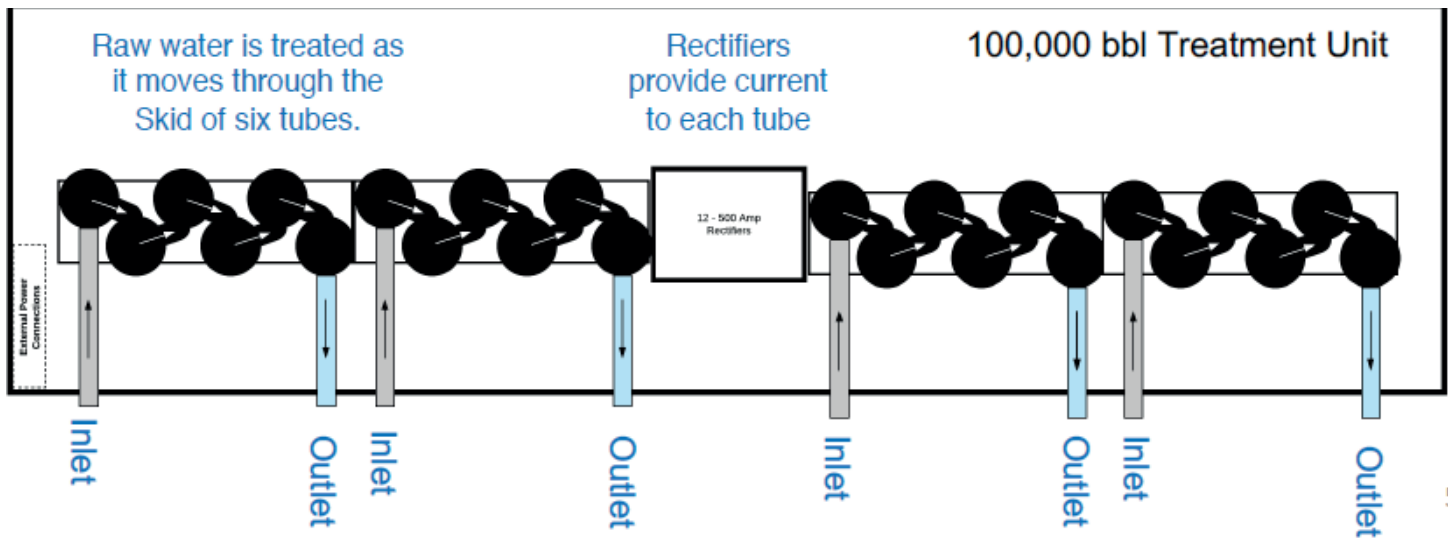

The TruClear solution is a revolutionary clean and green water treatment technology without the use of chemicals, low energy and minimal waste. The unique electrochemistry process ensures:

- Organic compounds (contaminates) are broken down into stable atoms and ions.
- Particle sizes of contaminants are reduced from 150 to less than 10 microns.
- Sodium Hypochlorite formation with significant residual Free Chlorine
- Hydroxyl and Super Oxide formation
- The iron redox process changes its colloidal and magnetic properties.
- Minimizes unwanted compounds of Iron, Boron, Barium, Strontium, Lithium, and
- Phosphates



Pre-treated water moves through a series of six (6) reaction chambers on a skid. A Treatment Unit contains one to five skids. The water traverses a set of non-donating Anodes and Cathodes in each reaction chamber.

The TruClear coating allows the anodes and cathodes to produce unique chemical redox reactions on the electrodes' surfaces. The TruClear current distribution system allows the treatment system to run at higher amperages in the reaction chambers while at low voltage (typically 3 to 5 volts). Allowing the system to break down the contaminated molecules into their base elements, Atoms, and Ions.



Benefits of the TruClear Technology

- Affects five key issues in (ESG) Environmental, Social, and Governance
- Eliminates the risk of chemical spills and the handling of dangerous chemicals
- Hypochlorite is generated not dangerous or caustic chemicals
- Treatment is less complicated than chemical injection alternative
- Treated water has enhanced viscosity
- Treated water has negative scaling tendencies
- Treated water has a lower NORM value due to the negative scaling tendencies.
- Treatment normalizes pH
- Treated water is consistent even with variations in raw water quality
- No flocculation, thus no waste generation from the treatment process

Areas of application

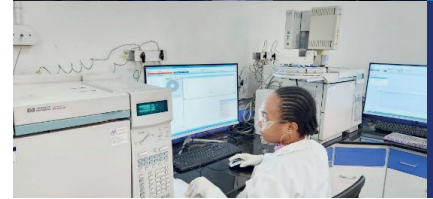
- Oil and Gas Industry (Produced water management, cooling water treatment, effluent water treatment etc)
- Leachate (landfill)
- Food industry
- Agriculture
- Municipalities (Domestic use)

LABORATORY SERVICES

General Laboratory services

TPI's world class laboratory has consistently offered services to numerous clients across West and Central Africa in line with standard analytical methods according to ASTM, APHA and USEPA guidelines. A brief list of the analysis we provide include

- Microbiological Analysis: Bacterial and Fungal Counts and Identification, Coliform, Sulphur Reducing Bacteria, etc.)
- Physico-chemical Analysis: pH, Electrical Conductivity, Total Dissolved and Suspended Solids, Total Hardness, Alkalinity, etc.
- Nutrients: Sulphate, Nitrate, Phosphate, Potassium, Sodium, Silicate, etc.
- Metal Analysis: Fe, Zn, Cr, Pb, Cu, Cd, Hg, V, Ni, Ba, Co, As, etc
- Organics: Volatile and Semi-volatile Organic Constituents: PAH, TPH, etc



Turn-key Remote Laboratory Services

We offer on-site support by deploying mobile structures to provide turnkey laboratory solutions for our clients. Our team of experts can deploy in the most challenging environments whilst maintaining the quality expectations our clients demand. Our mobile laboratory is fully equipped with AAS, GC and other testing equipment, as required by the need, as well as facilities to ensure a safe working environment. We also comply with approved methodologies as stipulated by both national and international environmental protection agencies and adhere to strict QA/QC procedures.



Eco-Toxicology Services

Eco-Toxicity, Bioaccumulation and Biodegradability Analysis: TPI provides a full range of environmental ecotoxicity, bioaccumulation and biodegradability analyses of various environmental matrices (water, soils, sediments, effluent) for industries who want to comply with local and international standards.

Geo-Chemical Fingerprinting services

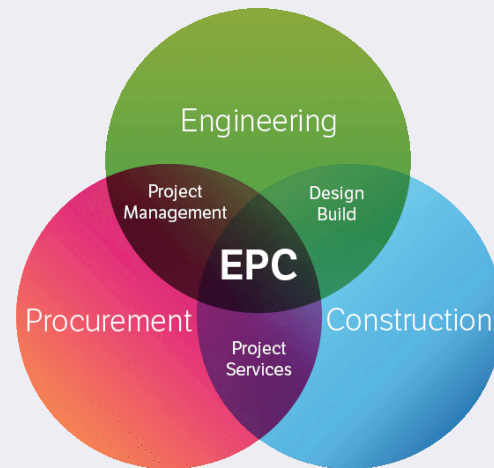
Geochemical /Fingerprinting Analysis: TPI can determine the geological origin and history of your crude oil, as well as its quality and potential for refining.

Production chemistry Petroleum products testing and Crude oil Assays.

In the petroleum industry, accurate and reliable testing is essential to ensure the quality and safety of products. Our petroleum product testing services include everything from gasoline and diesel to lubricants and additives. We offer a wide range of specific tests and analyses, including flash point, pour point, viscosity, and corrosion testing, to ensure that your products meet the highest standards.

EPC And Asset Integrity

In today's rapidly evolving industrial landscape, ensuring the integrity of assets and effective corrosion management are crucial for sustainable operations. Our company stands at the forefront of providing comprehensive solutions in asset integrity, corrosion management, and inspection. With a proven track record of excellence and a commitment to innovation, we are the trusted partner for industries worldwide.



Asset Integrity Management

We offer comprehensive asset integrity management services that cover the entire lifecycle of your assets. From design and construction to operation and maintenance, our experts ensure the integrity, safety, and compliance of your critical infrastructure. Our services include;

- Risk Assessment
- Fitness-For-Service Evaluations
- Structural Integrity Analysis.
- Fabric Maintenance
- Composite Wrapping
- Tubing & Pipeline Coating (Internal & External)
- Chemical Injection Skid Automation
- Predictive Maintenance Application (CorrManager)
- Marine / Offshore Equipment Maintenance (E.G Mooring Chains, Buoys, Loading Hoses Etc)
- Produced Water Treatment

Inspection and Non-Destructive Testing (NDT)

We specialize in advanced inspection techniques and NDT to assess the condition of your assets accurately. Our team of certified inspectors utilizes cutting-edge technologies such as ultrasonic testing, to detect defects, discontinuities, and weaknesses in critical components. Our comprehensive inspection reports enable informed decision-making and proactive maintenance planning.

- Leak Detection & Repair
- Underwater ROV services (visual, UT, CP etc)
- Hull & Tank Inspection
- Civil / Structures Inspection
- Advanced NDT (e.g Phase Array, Shear Wave, LRUT, Eddy Current, etc)

Routine NDT (e.g radiography, magnetic particle testing, thermography, etc)



Corrosion Management

Corrosion poses a significant threat to industrial assets, leading to reduced efficiency, increased downtime, and safety hazards. Our corrosion management solutions are designed to prevent, control, and mitigate corrosion-related issues. We provide the following services;

- Corrosion Risk Assessment
- Material Selection
- Corrosion Control Strategies
- Cathodic Protection
- Corrosion Failure Analysis
- Corrosion Monitoring & Prevention



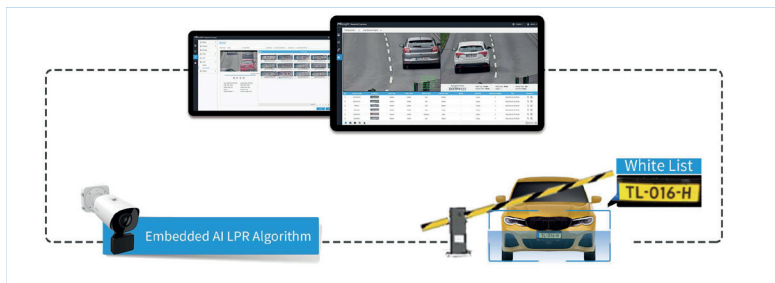
DIGITAL SERVICES

TPI has established its digital services practice to be committed to developing and maintaining high standards, enjoying the confidence of clients, and achieving a blue-chipped status in Security & Software solutions and continues to focus on innovation and scale throughout the world.

Our team is able to develop the requirements of technological solutions to our clients needs and offer value for money and excellent delivery.

Security & Software Solutions

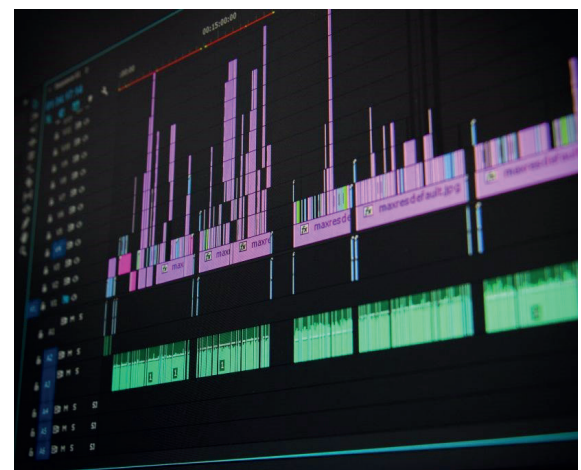
People	Processes	Technology
Physical Security Vendor Management <ul style="list-style-type: none"> Cloud Computing Information Exchange Workforce Security <ul style="list-style-type: none"> Background checks Sanctions and Termination Acceptable Use <ul style="list-style-type: none"> Permitted use of Information Assets Prohibited use of Information Assets Protection of Information Assets Controls of Internet Usage Privacy and Monitoring Workstation Use 	IS Risk Management Security Policy Management <ul style="list-style-type: none"> Documentation Availability Documentation Retention Documentation Updates Incident Management <ul style="list-style-type: none"> Incident Identification and Investigation Incident Reporting, Escalation and Breach Notification Compliance <ul style="list-style-type: none"> Compliance with Security Policies and Standards Evaluation (e.g., technical compliance checking, internal / external security testing) Internal / external compliance reporting 	Vulnerability and Patch Management Business Continuity and Disaster Recovery <ul style="list-style-type: none"> Applications and Data Criticality Analysis Contingency Operations Data Backup Disaster Recovery Emergency Mode Operation Testing and Revision Logging and Event Monitoring <ul style="list-style-type: none"> Audit Controls Information System Activity Review Log-in Monitoring API calls Cryptographic Management <ul style="list-style-type: none"> Encryption and Decryption Integrity Controls Transmission Security Access Management <ul style="list-style-type: none"> Access Authorization Access Establishment and Modification Automatic Logoff Emergency Access Password Management Person or Entity Authentication Unique User Identification Infrastructure Security Operating System Access Control Network Security <ul style="list-style-type: none"> Network Security Management Remote Access Security Management Management of Third-Party Network Access
Asset Management Secure System and Software Lifecycle Management Information Asset Management <ul style="list-style-type: none"> Inventory of Assets Ownership of Assets Acceptable Use of Assets Classification Guidelines Information Labeling, Handling and Disposal 		
Mobile Media Device <ul style="list-style-type: none"> Removable Media Management Mobile media security controls Media Disposal & Disposition Media Re-use 		



Data Management & Reporting

We offer a range of services, including

- Data management: We can help you organize and store your environmental data in a way that is efficient and easy to access. We can also help you develop processes and systems for collecting, verifying, and updating your data on an ongoing basis.
- Data analysis: Our team has the skills and knowledge to extract valuable insights from your environmental data. We can use a variety of analytical techniques, such as statistical analysis and modeling, to help you understand trends and patterns in your data.
- Reporting: We can help you create clear and concise reports that present your environmental data in a way that is easy to understand and communicate to stakeholders.



TRAINING

We offer a range of training programs to support your professional development needs, including:

- ❑ ESG training: Our team of experts can provide training on a wide range of ESG topics, including sustainability reporting, stakeholder engagement, and environmental, social, and governance risk management. Our training programs are designed to help you understand and implement industry best practices and standards, such as the Global Reporting Initiative (GRI) guidelines and the ISO 26000 social responsibility standard.
- ❑ Environmental laboratory training: We offer a range of training programs specifically tailored to the needs of environmental laboratories. These programs cover a variety of topics, including sample preparation, instrumentation, and quality control. Our training programs are designed to help you and your team stay up-to-date on the latest techniques and technologies used in the environmental laboratory field.
- ❑ Customized training: In addition to our standard training programs, we also offer customized training solutions to meet the specific needs of your organization. Whether you need training on a particular topic or want to develop a tailored training program for your team, we can help. Our team of trainers has expertise in a wide range of environmental and technical topics, and we can work with you to develop a training program that meets your specific needs and goals.



TPI IN NUMBERS

30+

Years In Operation

95%

Retention Rate

7

Office Locations

357+

Projects Completed

COLLAGE



TPI COMPANY ADDRESS

Ikeja Office (Head Office):

52/54 Oluwaleimu Street, off Toyin Street, Ikeja, Lagos, Nigeria.

Lekki Office and Laboratory:

7, Salami Eleku Street, Iraboko-Awoyaya, Lekki, Lagos, Nigeria

Port Harcourt Office and Laboratory:

137/139, Abuloma Road, Abuloma, Port Harcourt, Rivers State, Nigeria.

Warri Office and Laboratory:

Energy Link Road, Ugbuwangue, Warri, Delta State, Nigeria

Republic of Guinea, Conakry:

Bloc 19, Ratoma Dispensaire, Commune de Ratoma, Republic of Guinea

RDCongo, Lubumbashi:

Societe AMT Congo No764, AV.M'siri, Commune de Lubumbashi, Ville de Lubumbashi, RDCongo

Email: info@tpigrp.com; phone: +2348177668572 +2348033030049



TPI TECHNOLOGY
PARTNERS
GROUP INTERNATIONAL